

1 HINGE

6-8T		11-03-0001
24T		11-03-0002
35-45T		11-03-0003
50T		11-03-0004

2 HINGE PIN

6-8T	1-1/4in X 2-3/4in LG.	11-03-0007
24T	1-7/8in X 5in LG.	11-03-0013
35-45T	2-1/4in X 7in LG.	11-03-0017
50T	2-1/4in X 8in LG.	11-03-0020

3 HINGE UPPER PIVOT

6-8T	1in X 6in LG.	11-03-0006
24T	1-7/8in X 5in LG.	11-03-0012
35-45T	3in X 7-7/8in LG.	11-03-0016
50T	4in X 9-3/4in LG.	11-03-0019

4 STANDARD FIXED HINGE

6-8T	3/8in X 3in LG.	11-03-0005
24T	1in X 4in LG.	11-03-0011
35-45T	1-1/2in X 4in LG. (WITH ADJUSTMENT BOLT)	11-03-0015
50T	1-1/2in X 5in LG. (WITH ADJUSTMENT BOLT)	11-03-0018

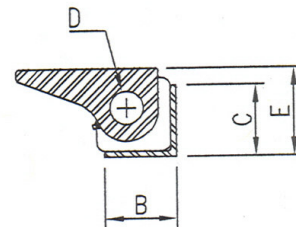
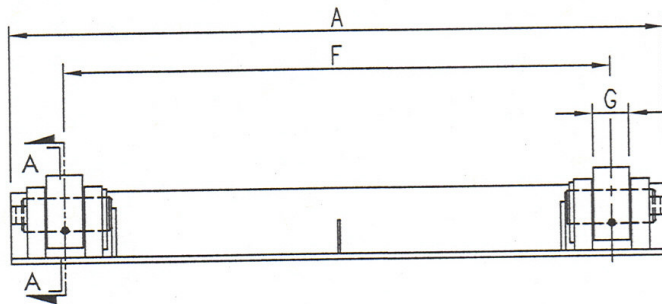
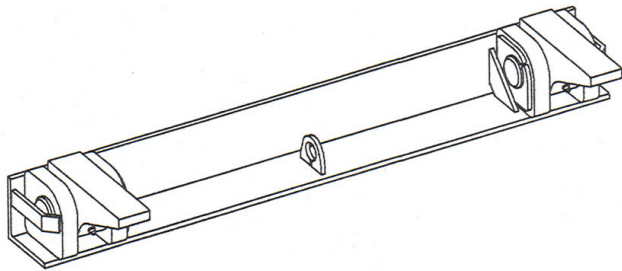
5 SILL REINFORCEMENT KIT

8 TO 50T	(4) PIECES KIT / 3/8in X 11-3/4in LG.	11-03-0022-1
----------	---------------------------------------	--------------

6 RUBBER MOUNT ISOLATION SYSTEM KIT

6A	8in RUBBER EXTRUSION BRACKET	15-04-0027
6B	8in RUBBER EXTRUSION	15-04-0028

Tons	A	B	C	D	E	F	G
6-8	40"	3"	3"	1 1/4"	4 1/8"	30 1/2"	1"
24	36 1/2"	4"	4"	1 7/8"	4 15/16"	30 1/2"	2"
35-45	38 1/2"	4"	4"	2 1/4"	5"	30 1/2"	3"
50	39 1/2"	5"	5"	2 1/4"	5 31/32"	30 1/2"	4"



SECTION A-A